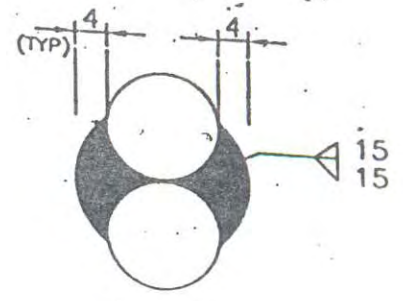
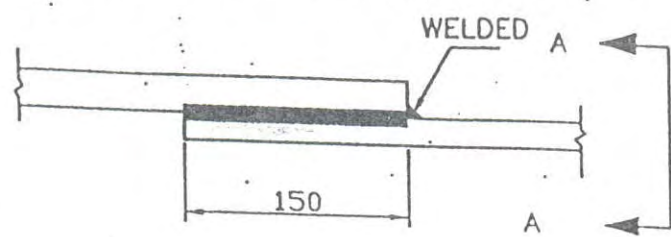


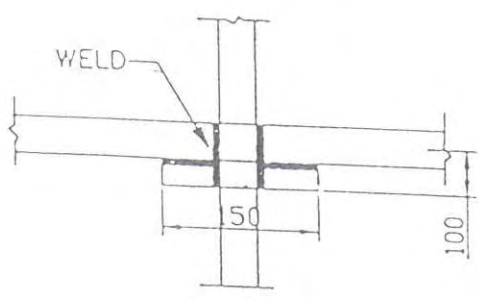
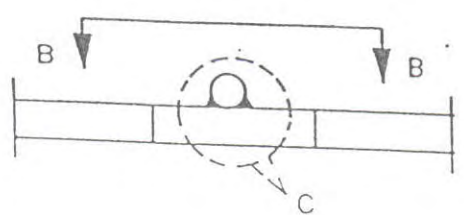
• ROD TO ROD

1. STRAIGHT LAP JOINT/RISER

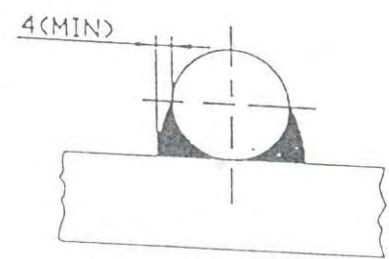


VIEW A-A

2. RIGHT ANGLED JOINT

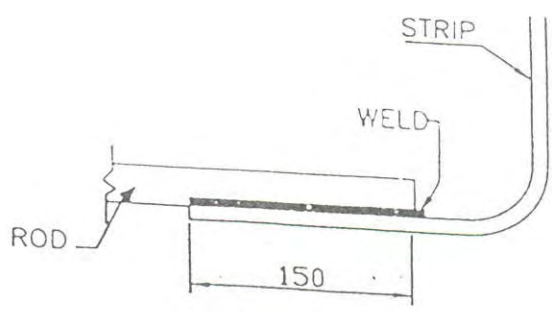
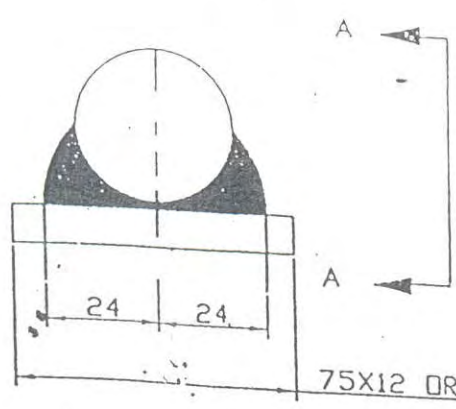


VIEW B-B



VIEW C

3. ROD TO STRIP



VIEW A-A



EQUIPMENT EARTHING DETAILS

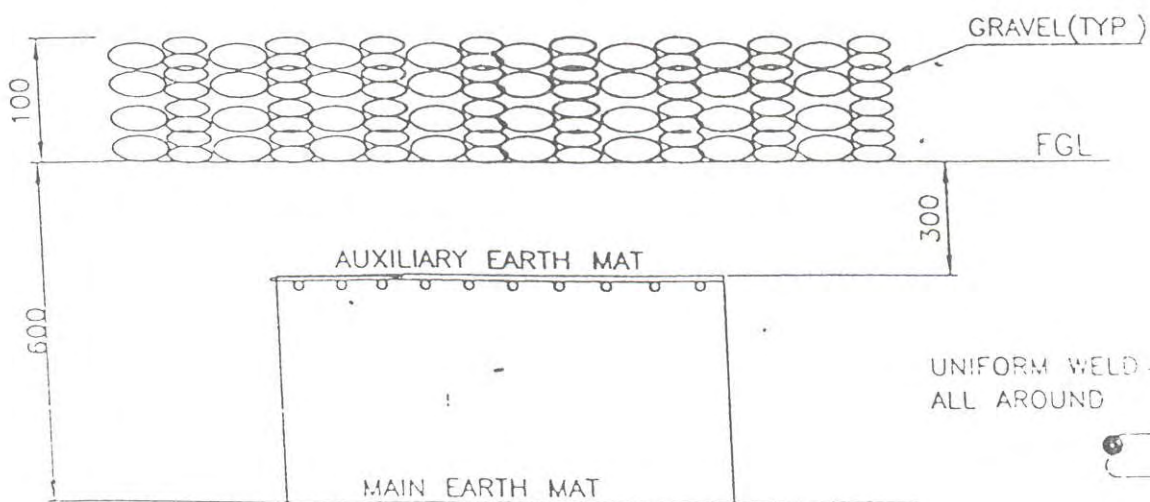
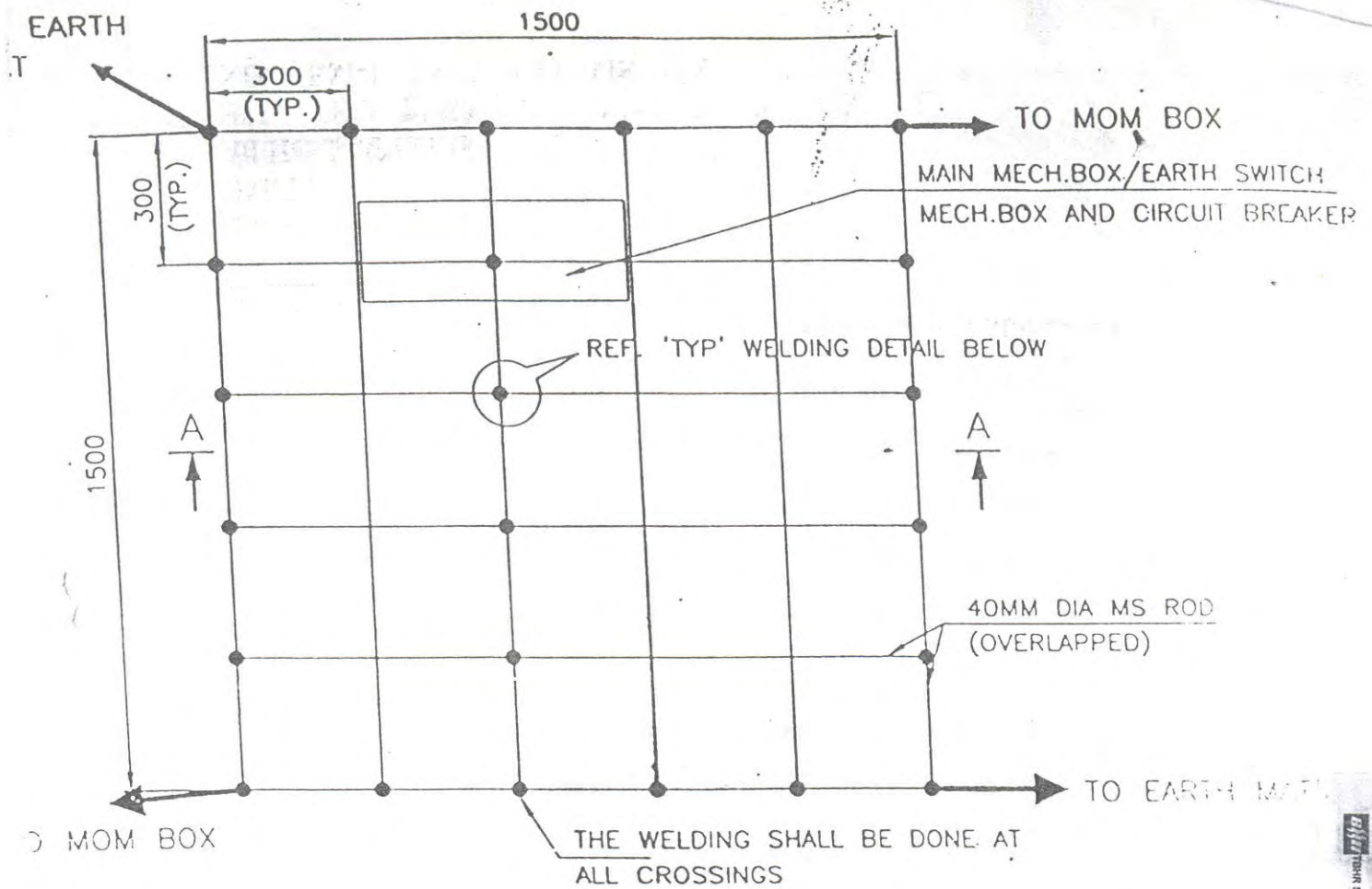
DRG. No.

DRG. No.

TB-STD-316-Rod Welding

REV. 00

SHEET No. 00



UNIFORM WELD  
ALL AROUND



SECTION AA

NOTE:

AUX. EARTH MAT SHALL BE SO POSITIONED THAT THE FOOT OF THE OPERATOR ALWAYS LIE OVER THE AUX. EARTH MAT AREA WHILE ATTENDING / OPERATING THE MECH. BOX THE CABLE TRENCH ROUTING SHALL BE PLANNED ACCORDINGLY.



CC M/FU. DRC. REF.

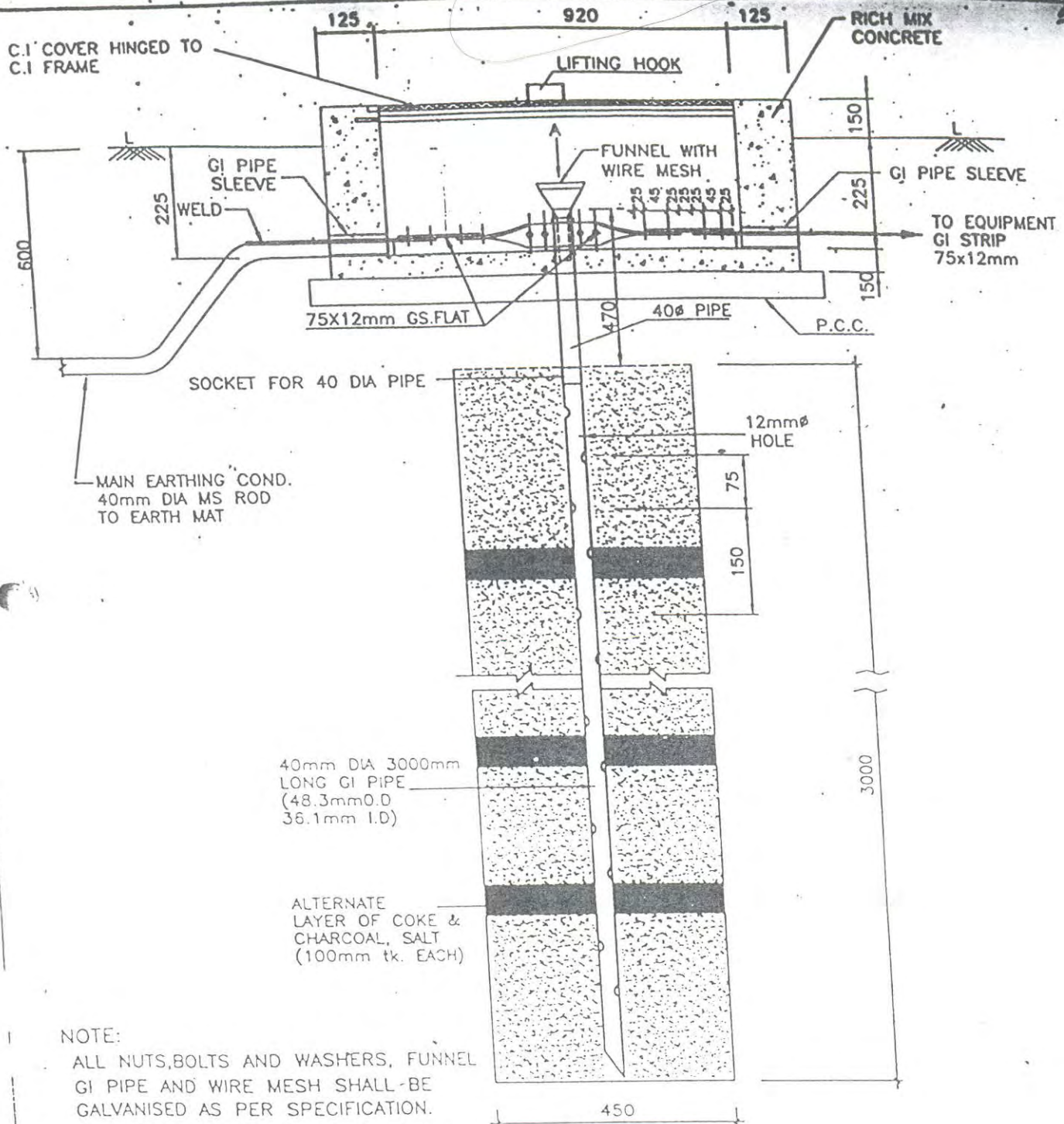
Report No

EQUIPMENT EARTHING DETAILS

AUXILIARY EARTH MAT FOR ISOLATOR MAIN MECH. E/S  
MECH. BOX & CB (TYP.)

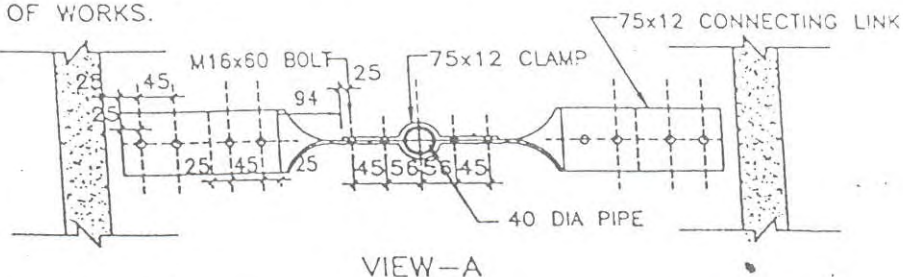
TB-STD-316-Auxiliary Mat.





**NOTE:**

1. ALL NUTS, BOLTS AND WASHERS, FUNNEL GI PIPE AND WIRE MESH SHALL BE GALVANISED AS PER SPECIFICATION.
2. PIPE SLEEVE ENDS SHALL BE SEALED AFTER COMPLETION OF WORKS.
3. FUNNEL SHALL BE SECURELY HELD TO THE PIPE.



**EQUIPMENT-EARTHING DETAILS  
DETAILS OF PIPE EARTH ELECTRODE  
IN TREATED EARTH PIT (ET)**

COMPUTER REF. NO.

DRG. No.

TB-STD-316-PIPE Electrode

REV. 00

SHEET No. 00